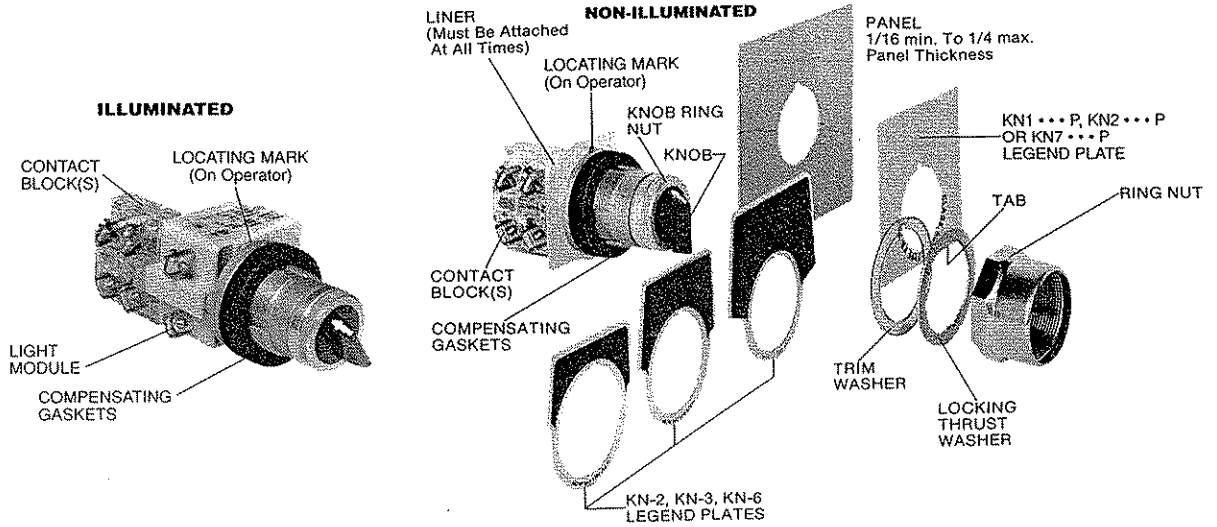




CLASS 9001 TYPE SKS* NON-ILLUMINATED SELECTOR SWITCH TYPE SK**J ILLUMINATED SELECTOR SWITCH - NEMA 4X UNDERWRITERS LABORATORIES LISTED FOR USE ON A FLAT SURFACE OF TYPE 1, 2, 3, 3R, 4, 4X, 6, 12 AND 13 ENCLOSURES

CLASS 9001 TYPE KS* NON-ILLUMINATED SELECTOR SWITCH OPERATOR AND TYPE K**J ILLUMINATED SELECTOR SWITCH OPERATOR UNDERWRITERS LABORATORIES LISTED FOR USE ON A FLAT SURFACE OF TYPE 1, 2, 3, 3R, 4, 6, 12 AND 13 ENCLOSURES



- A. Installation of Operator to Panel Using Class 9001 Type KN-2, KN-3 or KN-6 Legend Plates.
See Cam Replacement Instructions Before Installing Contact Blocks.
1. Mount only Class 9001 Type KA Contact Block (maximum of 2 Contact Blocks mounted in tandem, total of 4) to the operator. Tighten Mounting Screws to 5-8 in. lb.
 2. Remove the knob ring nut, knob, ring nut, locking thrust washer and trim washer from the operator.
 3. Discard the locking thrust washer and trim washer.
 4. Retain the required number of compensating gaskets (determined from Figure 1) on the operator.
 5. Insert the operator into the panel from the rear with the locating mark at the top.
 6. Install the required Legend Plate on the operator by aligning the tab with the slots in the operator and panel.
 7. Install the ring nut on the operator and tighten with a Class 9001 Type K-95 ring nut wrench. Recommended tightening torque 6-8 pound-feet.
 8. Install the knob gasket, knob and knob ring nut on the operator.
- B. Installation of Operator to Panel Using Class 9001 Type KN-1, KN-2, and KN-7 Plastic Legend Plates.
Follow steps A1, A2, A4 and A5 above.
6. Install the Legend Plate on the operator.
 7. Install the locking thrust washer on the operator by aligning the tab with the slots in the operator, Legend Plate and panel.
 8. Install the ring nut on the operator and tighten with a Class 9001 Type K-95 ring nut wrench. Recommended tightening torque: 6-8 pound-feet.
 9. Install the knob gasket, knob and knob ring nut on the operator.
- C. Installation of Operator to Panel Without Legend Plate Follow steps A1, A2, A4 and A5 above.
6. Install the trim washer on the operator.
 7. Install the locking thrust washer on the operator by aligning the tab with the slots in the operator, trim washer and panel, then follow step B8 above.
 8. Install the knob gasket, knob and knob ring nut on the operator.

MINIMUM CENTERLINE SPACINGS

	Vertical	Horizontal
Without Legend Plate	1.56	2.25
With Legend Plate	Consult your Square D Digest	

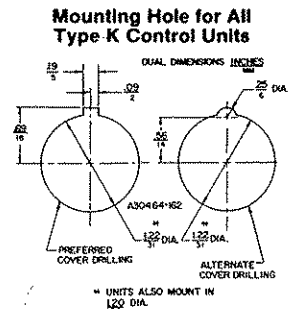
GASKET SELECTION CHART	
Panel Thk.	No. of Gaskets
1/16	4
1/8	3
3/16	2
1/4	1

Figure 1



CLASS 9001 TYPE K-95 RING NUT WRENCH

Figure 2



HOLE PUNCH

The 1.22 diameter hole required to mount Type K operators may be cut with Greenlee knockout punch No. 730-S. The notch may be cut with Greenlee punch No. 730-K. Both punches are available through electrical wholesalers.

Figure 3



CONTACT SEQUENCE SELECTION TABLE

NOTE: (X) Contacts Closed — (O) Contacts Open

CONTACT BLOCK LOCATION		NON-ILLUMINATED OPERATOR TYPE																	
		KS11	KS42	KS43	KS44	KS45	KS46	KS47	KS25	KS34	KS88								
CONTACTS		CAM																	
		E	B	C	D	E	F	G	E	D	H								
BLOCK		KNOB POSITION																	
		1	2	3	1	2	3	1	2	3	1	2	3	4					
BLOCK A ONLY	A1 A2	X O	O X	O O	O X	O O	X O	O O	O X	O O	X O	O X	O O	X O	O O	X O	O O	X O	O O
BLOCK B ONLY	B1 B2	X O	O X	O O	O X	O O	X O	O O	O X	O O	X O	O X	O O	X O	O O	X O	O O	X O	O O
BLOCKS B AND A	A1 A2 B1 B2	X O X O	O X O X	O O O O	O X O X	O O O O	X O X O	O O O O	O X O X	O O O O	X O X O	O X O X	O O O O	X O X O	O O O O	X O X O	O O O O	X O X O	O O O O

CONTACT BLOCK LOCATION

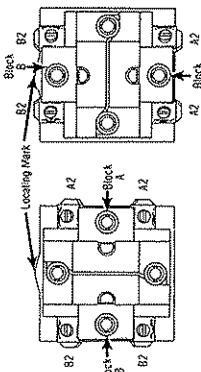


FIGURE #7 — WIRE CHANNELS LOCATED ON TOP AND BOTTOM CONTACT BLOCK POSITION (Rear View)

FIGURE #5 — WIRE CHANNELS LOCATED ON SIDES CONTACT BLOCK POSITION (Rear View)

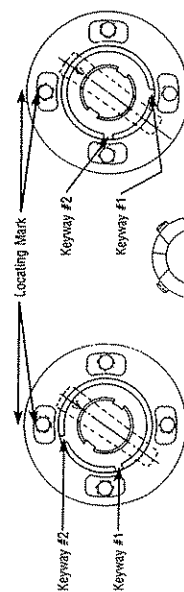


FIGURE #8 (REAR VIEW) 2 Position Spring Return to Right 2 and 4 Position Maintained

FIGURE #9 (REAR VIEW) 2 Position Spring Return To Left

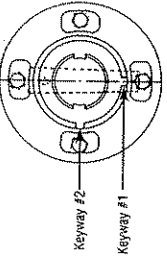


FIGURE #10 (REAR VIEW) 3 Position Maintained

3 Position Spring Return Left or Right to Center 3 Position Spring Return Both Sides to Center

- NOTE:** For Class 9001 Type KS25* the left most knob position is position #1.
- CAM REPLACEMENT (Wire Channels on Side)**
1. Position the operator with the locating mark on the operator toward the top as shown.
 2. Rotate the knob to the switch position shown in Figures 8, 9 and 10 as required.

NOTE: The knob and knob ring nut may require removal and repositioning to insure proper cam/knob positioning.
 3. Snap the cam into position with the cam key inserted into Keyway #1.
- CAM REPLACEMENT (Wire Channels on Top and Bottom)**
- Follow steps 1 and 2 above and snap the cam into Keyway #2.